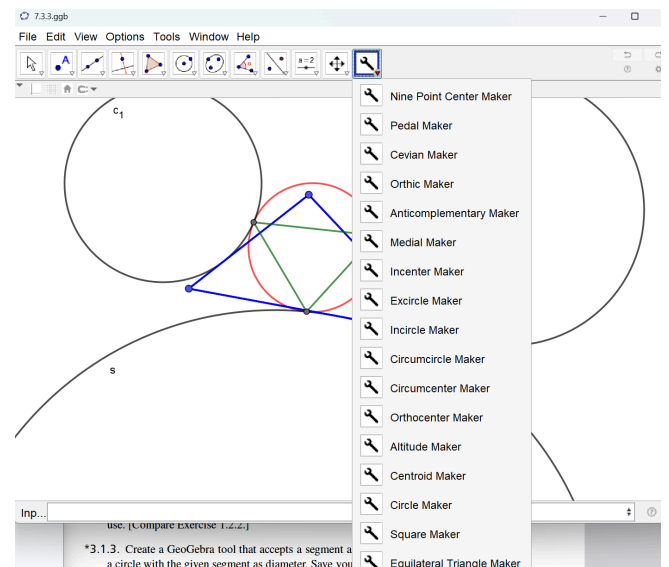
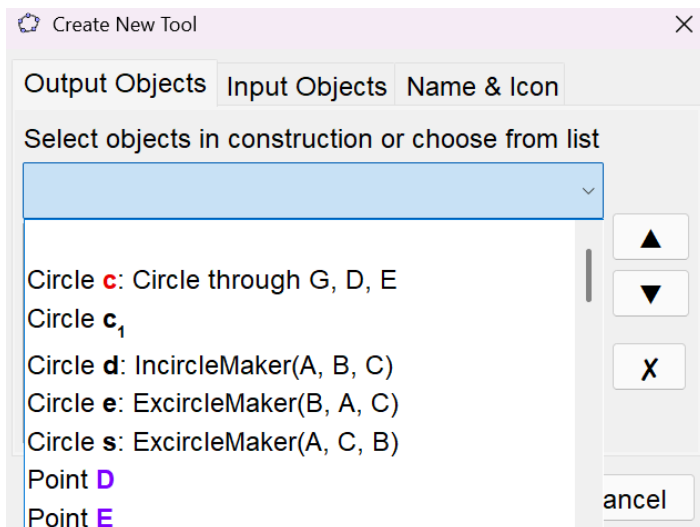
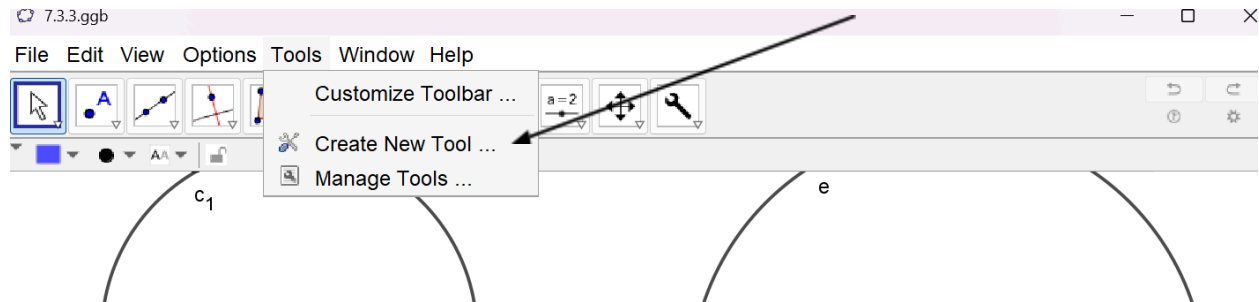
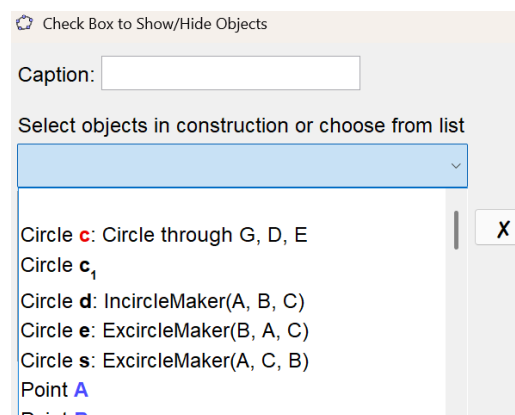
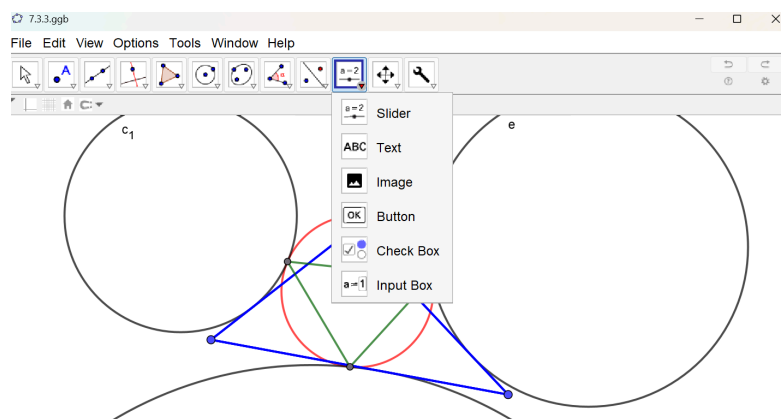


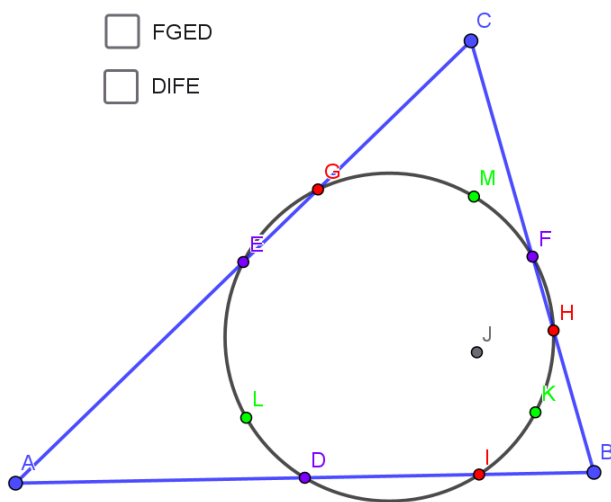
First, how to create a new tool. Select the menu option from the drop down menu. You then select your inputs and outputs from your already made example and then give it a name and optionally an icon. When done you will have it added to your toolbar where you can build up an entire repository.



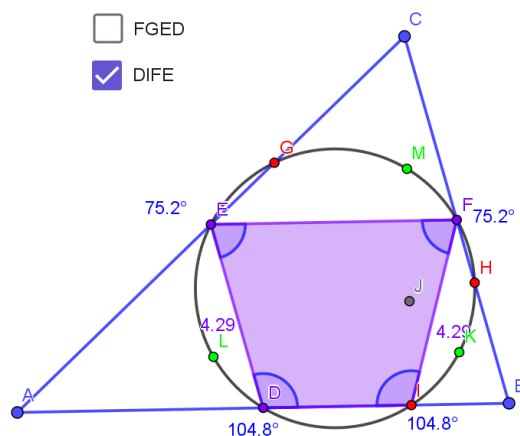
Next is check boxes. Select the option from the menu shown below. From there you will give the checkbox a caption and then select from all of the visible elements in your work. When you are done selecting them a checkbox will appear. You can then turn it on or off to show or hide the selected elements as shown in the example below.



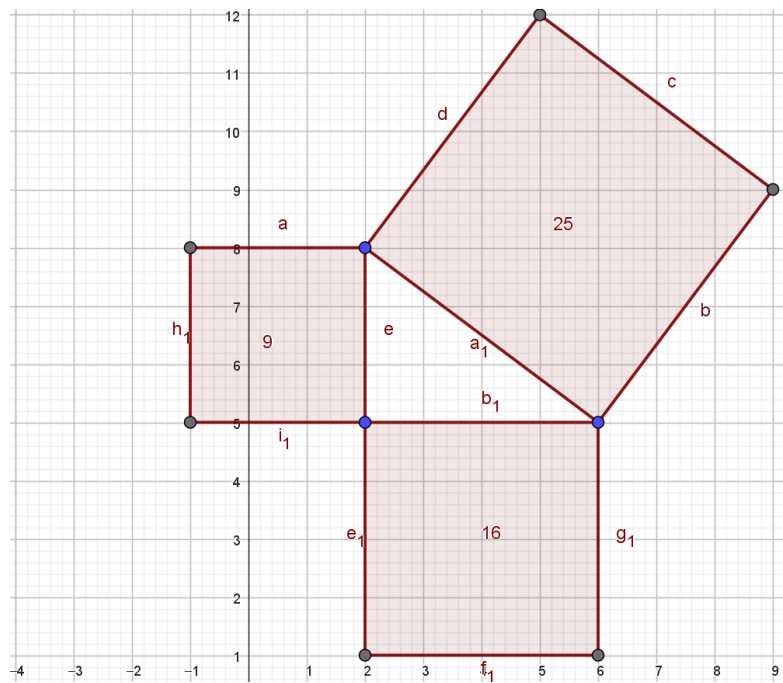
- ☐ DEFH
- ☐ FGED
- ☐ DIFE



- ☐ DEFH
 - ☐ FGED
 - ☒ DIFE
- Slope EF = 0.02
Slope DI = 0.02



Bride's Chair - A right triangle with squares of length equal to the length of each side of the triangle. An example is shown below: This is also known as the **Vecten configuration**.



Vecten Point - This is the center of each of the squares above. The center of the triangle formed by this is also the orthocenter of the original triangle.

