

lib. bod k

Stlačení (roztaž.)
 kružnice alias
PAROVELIS

$$\left. \begin{aligned} x_p &= a \cdot \cos \alpha \\ y_p &= a \cdot \sin \alpha \end{aligned} \right\} k$$

$$\begin{aligned} x_q &= a \cdot \cos \alpha \\ y_q &= \frac{b}{a} \cdot a \sin \alpha \\ y_q &= b \sin \alpha \end{aligned}$$

$$\left. \begin{aligned} x_q &= a \cos \alpha \\ y_q &= b \sin \alpha \end{aligned} \right\} e$$

$$x_Q = b \cos \alpha$$

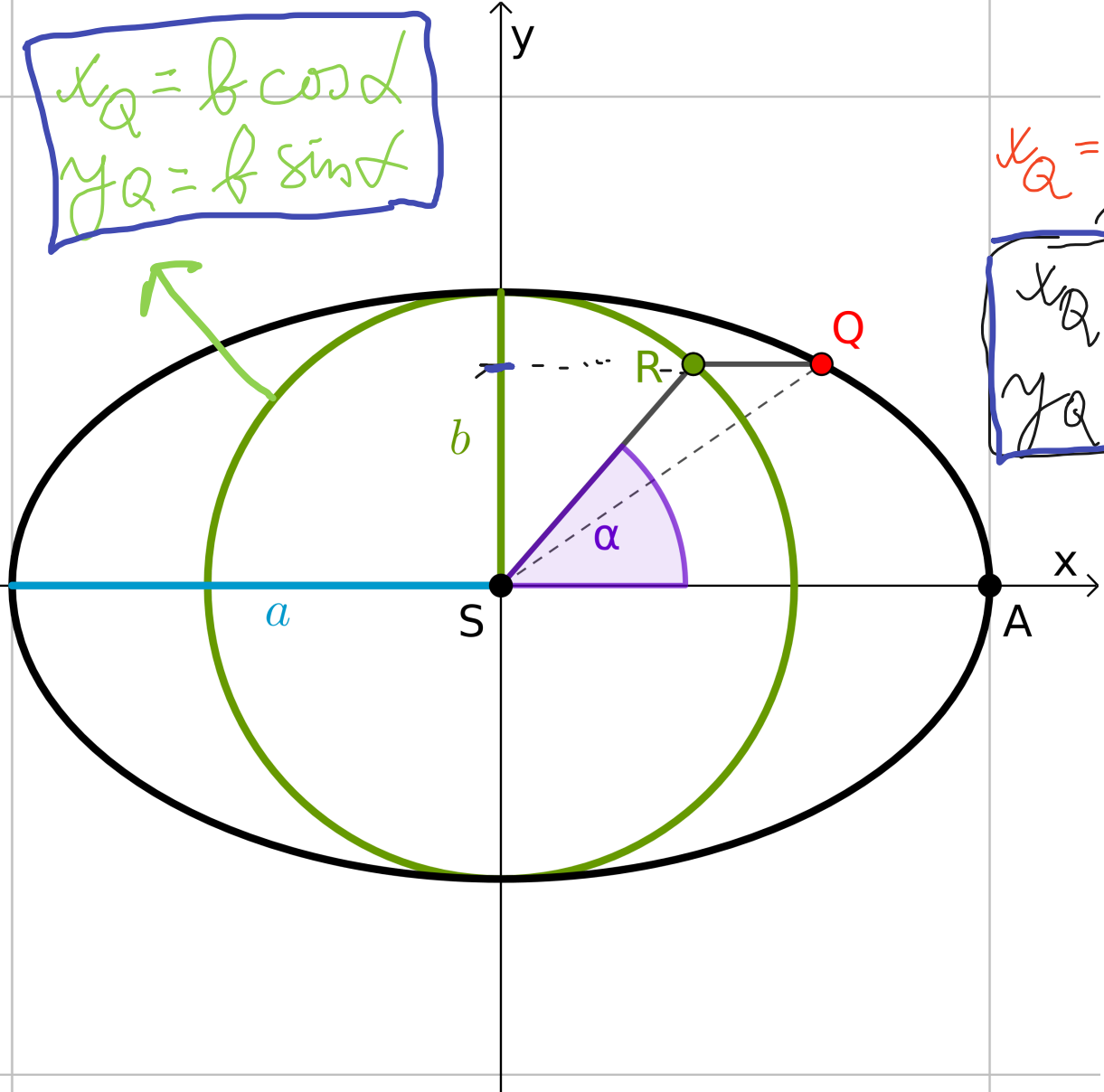
$$y_Q = b \sin \alpha$$

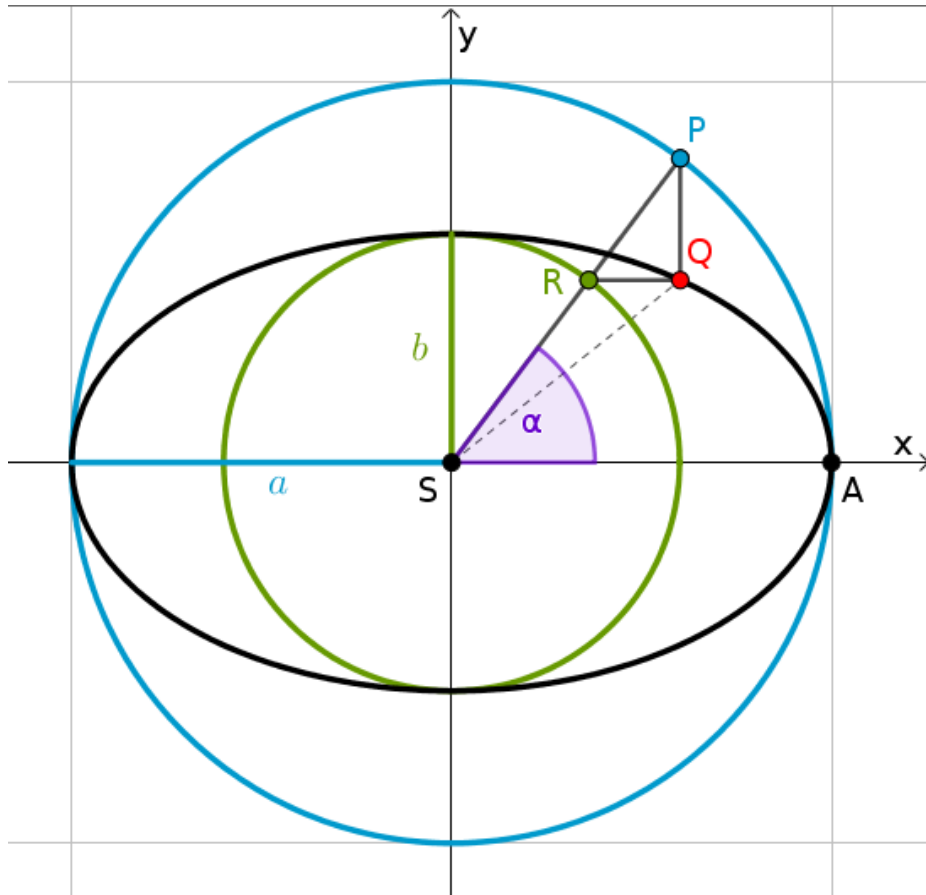
$$x_Q = \frac{a}{b} \cdot b \cos \alpha$$

$$x_Q = a \cos \alpha$$

$$y_Q = b \sin \alpha$$

e





svisle vodorovně

stlačení natažení

$\alpha = 53^\circ$

Rovnice elipsy

$$x_Q = a \cos \alpha$$

$$y_Q = b \sin \alpha$$

Bacha -- α není úhel QSA!