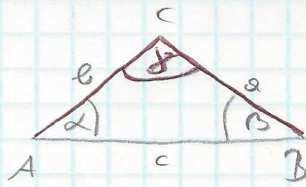
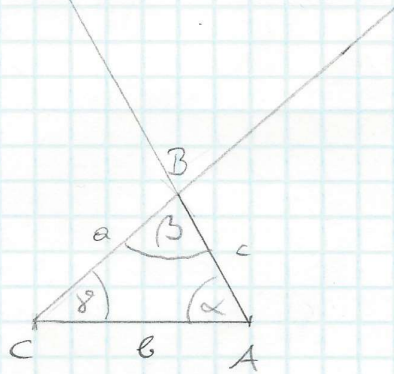


1 a)  $a = 2,7 \text{ cm}$   
 $b = 3 \text{ cm}$   
 $\gamma = 41^\circ$

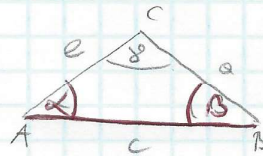


Seiten-Winkel-Seiten-Satz

$c = 2 \text{ cm}$   
 $\alpha = 61^\circ$   
 $\beta = 78^\circ$

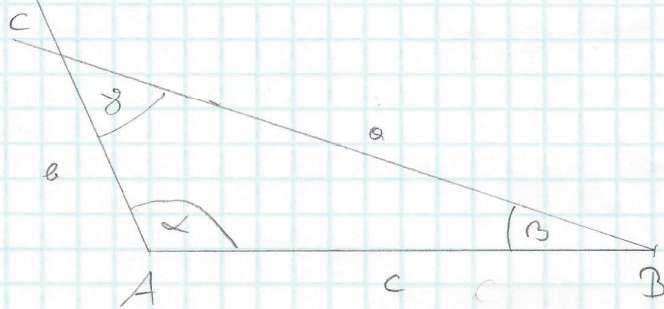


b)  $\alpha = 114^\circ$   
 $c = 7 \text{ cm}$   
 $\beta = 18^\circ$

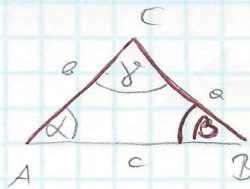


Winkel-Seiten-Winkel-Satz

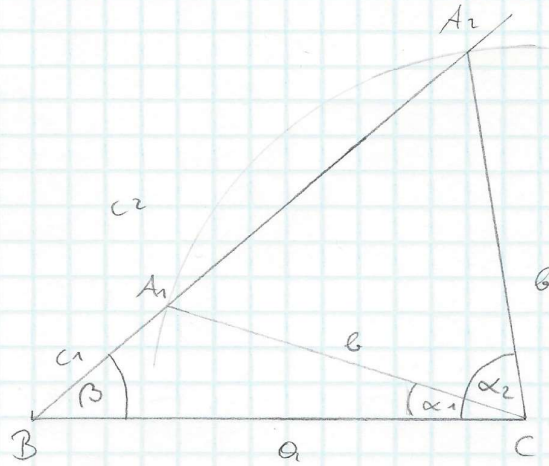
$\gamma = 48^\circ$   
 $a = 8,7 \text{ cm}$   
 $b = 3 \text{ cm}$



c)  $a = 6,8 \text{ cm}$   
 $b = 5,2 \text{ cm}$   
 $B = 40^\circ$

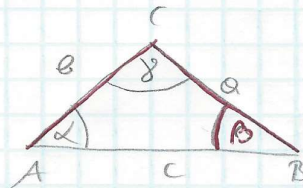


Seiten-Seiten-Winkel-Satz

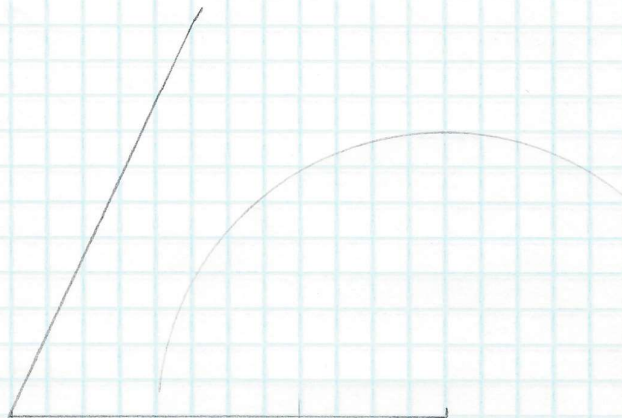


Ist nicht eindeutig konstruierbar, weil das Maß des Winkels der kürzeren Seite angegeben ist.

d)  $a = 6 \text{ cm}$   
 $b = 4 \text{ cm}$   
 $B = 65^\circ$



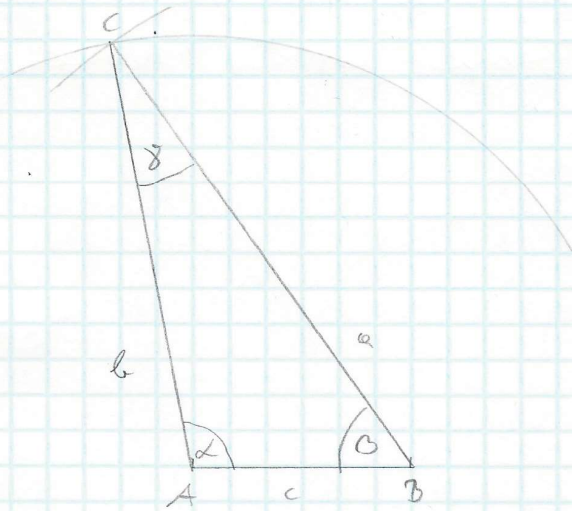
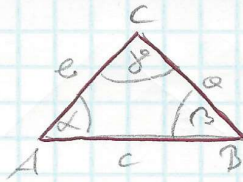
SSW-Satz



Ist nicht konstruierbar, weil das Maß des Winkels der kürzeren Seite angegeben ist.

$\Rightarrow$  kein Dreieck

e)  $a = 7,2 \text{ cm}$   
 $b = 6 \text{ cm}$   
 $c = 3 \text{ cm}$



$\alpha = 101^\circ$   
 $\beta = 55^\circ$   
 $\gamma = 24^\circ$