

How To Measure 1 Ml In A Dropper - Discover The Perfect Measurement: How Many mL in a Tincture Dropper .

. more The 1ml measuring dropper is suitable for all kinds of bottles and test tubes,it is very good quality. For more product details,please visit:[www.dla](http://www.dla).



?? ?? VISIT OUR SHOP ?? ??

## How much is 1 ml of liquid in a dropper? - YouTube



January 26th. Ashley Kutcher, House On The Water. Benny the Butcher, Everybody Can't Go. Courting, New Last Name. Etta Marcus, The Death Of Summer & Other Promises. Future Islands, People Who .

## How to Measure How Many Tincture Drops in a ml - JustALittleBite

### *essential oil conversions*

1 drop = approx. 60 mg

1 ml = 1/5 teaspoon

1 ml = approx. 16 drops

1 ml = fills 1 "00" capsule

5 ml = 1 teaspoon

5 ml = approx. 80 drops

15 ml = 1 tablespoon

15 ml = 1/2 fl. ounce

team H.O.P.E.  
thehopedrops.com

Spread the love The accurate measurement of 1 ml in a dropper is an important consideration in various fields such as medicine, chemistry, and cooking. Understanding the precise amount that constitutes 1 ml can ensure the correct dosage or proportion in different applications.

## The Ultimate Step: How Many ML in a Dropper - JustALittleBite



A typical dropper for these bottles measure a 1mL dose which equates to 29.5 dropper-fulls per 1-ounce bottle. A single drop contains 0.05mL which then equates to roughly 20 drops per dropper. This means one can estimate 590 drops per 1-ounce bottle.

**How Many Drops in 1 ml? | Calculate Volume With Ease - Tapp room**

## Milliliter to Drop Conversion Table

Milliliter [mL]	Drop
0.01 mL	0.2 drop
0.1 mL	2 drop
1 mL	20 drop
2 mL	40 drop
3 mL	60 drop
5 mL	100 drop
10 mL	200 drop
20 mL	400 drop
50 mL	1000 drop
100 mL	2000 drop
1000 mL	20000 drop

## How to Convert Milliliter to Drop

1 mL = 20 drop

1 drop = 0.05 mL

**Example:** convert 15 mL to drop:

15 mL =  $15 \times 20$  drop = 300 drop

To determine the ml capacity of a dropper, follow these steps: Check for Calibration: Some droppers come with markings on the glass or plastic tube indicating volume measurements in milliliters. These calibrated droppers provide an accurate way to measure liquids by allowing you to fill up to specific increments.

## **Dosing With Standard Droppers | Optimus Medica**

To determine how many milligrams are in one milliliter, we simply divide 10 by 1, resulting in 10 mg/ml. Understanding the Difference between Milliliters and Milligrams Milliliters (ml) measure volume, while milligrams (mg) measure weight or mass.

## Drops to ml Conversion - Omni Calculator



## Milliliter to Drop Conversion Table

Milliliter [mL]	Drop
0.01 mL	0.2 drop
0.1 mL	2 drop
1 mL	20 drop
2 mL	40 drop
3 mL	60 drop
5 mL	100 drop
10 mL	200 drop
20 mL	400 drop
50 mL	1000 drop
100 mL	2000 drop
1000 mL	20000 drop

## How to Convert Milliliter to Drop

1 mL = 20 drop

1 drop = 0.05 mL

**Example:** convert 15 mL to drop:

15 mL =  $15 \times 20$  drop = 300 drop

To find out how many drops are in a milliliter, we need to establish how many times we have to multiply the number of milliliters in a drop ( 0. 05ml) until we reach 1 ml.  $X \text{ drops} \times 0. 05 \text{ gtt} = 1 \text{ ml}$ .  $20 \text{ drops} \times 0. 05 \text{ gtt} = 1 \text{ ml}$ . Alternatively, we may divide 1 ml by 0. 05 to get the number of drops in 1 ml.  $(1/0. 05) \text{ ml} = 20 \text{ gtt}$ .

## How Many Drops in 1 mL: Understanding the Conversion

## Milliliter to Drop Conversion Table

Milliliter [mL]	Drop
0.01 mL	0.2 drop
0.1 mL	2 drop
1 mL	20 drop
2 mL	40 drop
3 mL	60 drop
5 mL	100 drop
10 mL	200 drop
20 mL	400 drop
50 mL	1000 drop
100 mL	2000 drop
1000 mL	20000 drop

## How to Convert Milliliter to Drop

1 mL = 20 drop

1 drop = 0.05 mL

**Example:** convert 15 mL to drop:

15 mL =  $15 \times 20$  drop = 300 drop

0:00 / 0:37 How much is 1 ml of liquid in a dropper? FIND HELP with Skylar 292 subscribers  
Subscribe Subscribed Share 535 views 6 months ago Discover the Truth: How Much is 1 ml of Liquid.

## Drop (unit) - Wikipedia



Safety Tips When Measuring Doses. Approximately 7 in 10 people fail to measure a dose of liquid medicine correctly, particularly common when using a dosing cup or dosing spoon rather than an oral syringe or dropper. Mix-ups are frequent between milligrams (mg)—the dose of the medicine—and milliliters (mL)—the volume of medicine to measure .

## Is 1 mL a full dropper? - YouTube



How to Convert Milliliter to Drop.  $1 \text{ mL} = 20 \text{ drop}$ .  $1 \text{ drop} = 0.05 \text{ mL}$ . Example: convert 15 mL to drop:  $15 \text{ mL} = 15 \times 20 \text{ drop} = 300 \text{ drop}$ .

## The Perfect Measurement For Your Needs: How Many ML in a Dropper Full



September 16, 2023 Ever wondered how many milliliters are in a dropper full? Well, I've got the answer for you! The volume of liquid that a dropper can hold varies depending on its size and design. However, on average, a standard dropper can hold approximately 1 milliliter (ml) of liquid when filled to the top.

## **How Many Drops In 1 ML? Comprehensive Guides & Helpful Tips**



## Milliliter to Drop Conversion Table

Milliliter [mL]	Drop
0.01 mL	0.2 drop
0.1 mL	2 drop
1 mL	20 drop
2 mL	40 drop
3 mL	60 drop
5 mL	100 drop
10 mL	200 drop
20 mL	400 drop
50 mL	1000 drop
100 mL	2000 drop
1000 mL	20000 drop

## How to Convert Milliliter to Drop

1 mL = 20 drop

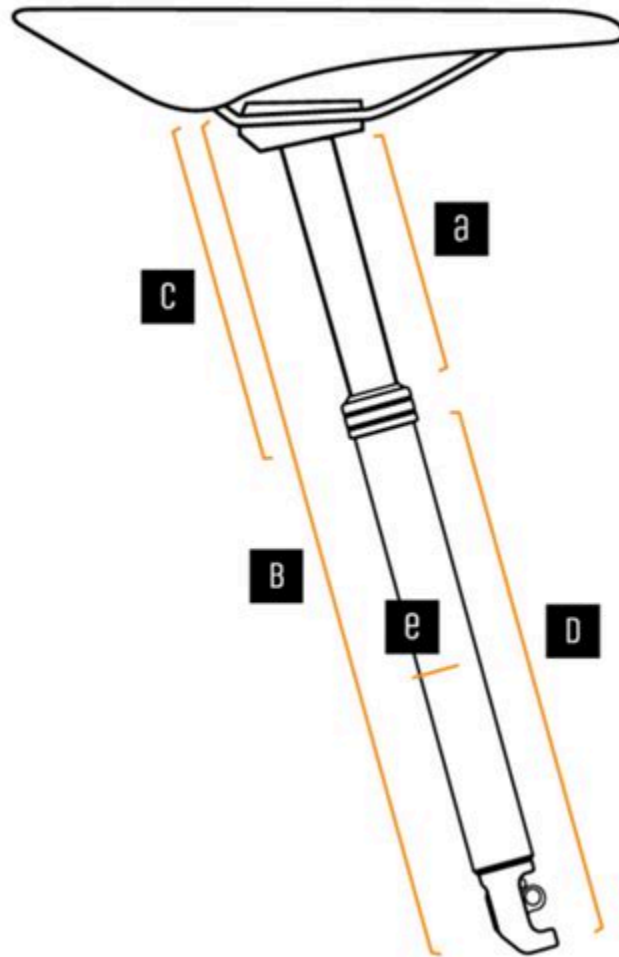
1 drop = 0.05 mL

**Example:** convert 15 mL to drop:

15 mL =  $15 \times 20$  drop = 300 drop

Contents [ hide] 1 What is dropper? 2 How many drops from a dropper is 1 ml? 3 Is 1mg and 1ml the same? 4 Where to buy droppers? 5 How many drops in 1 ml? 6 How to use the dropper correctly? 7 Tips for using the dropper correctly 8 Do you need a dropper for 1 mL? 9 How do you measure 1 ml in a syringe? 10 FAQ: Drops In 1ml 10. 1 Is 10 drops 1ml?

## 5 Simple Dropper Measurement Steps - PNW Components



The drop is an approximated unit of measure of volume, the amount dispensed as one drop from a dropper or drip chamber. . Pharmacists have since moved to metric measurements, with a drop being rounded to exactly 0. 05 mL (50  $\mu$ L, that is, 20 drops per milliliter). In hospitals, intravenous tubing is used to deliver medication in drops of .

## How much is 1 mL out of a dropper? - Home Alliance



1 milliliter (1 ml) of liquid is equal to 20 drops. This unit of measurement is also known as one cubic centimeter (1 cc). It is often used when administering medicine or other liquids orally. A standard eyedropper dispenses 0.05 mL per drop, meaning that there are 20 drops in 1 milliliter of medication. Chef Marco Velasquez.

## Convert Milliliter to Drop - Unit Converter

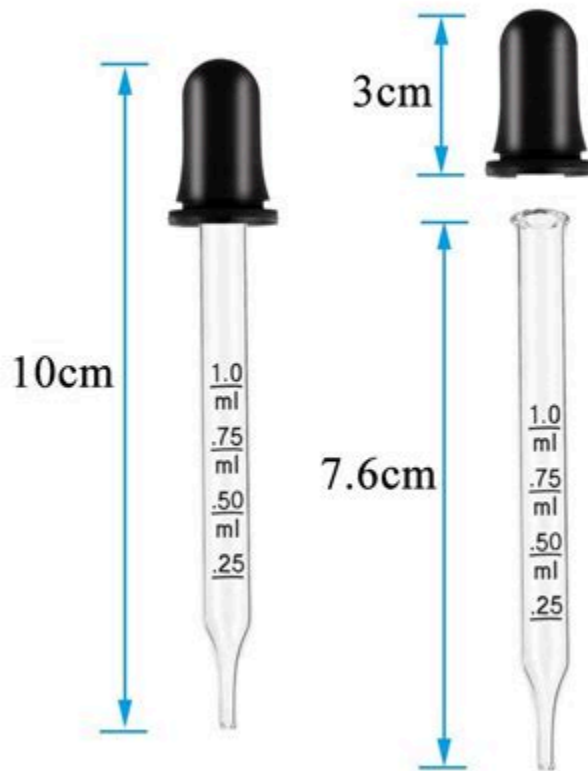
### Drop to Milliliter Conversion Table

Drop	Milliliter [mL]
0.01 drop	0.0005 mL
0.1 drop	0.005 mL
1 drop	0.05 mL
2 drop	0.1 mL
3 drop	0.15 mL
5 drop	0.25 mL
10 drop	0.5 mL
20 drop	1 mL
50 drop	2.5 mL
100 drop	5 mL
1000 drop	50 mL

2 ml Dropper: Some tincture bottles come with a larger dropper that can hold up to 2 ml of liquid. This size is often preferred by those who require higher doses or want to save time by taking larger amounts at once. 0.5 ml Dropper: In contrast to the standard 1 ml dropper, you may also come across smaller options that hold around 0.5 ml of liquid.

## How to Accurately Measure 1 ml in a Dropper (2023)

### Product Size:



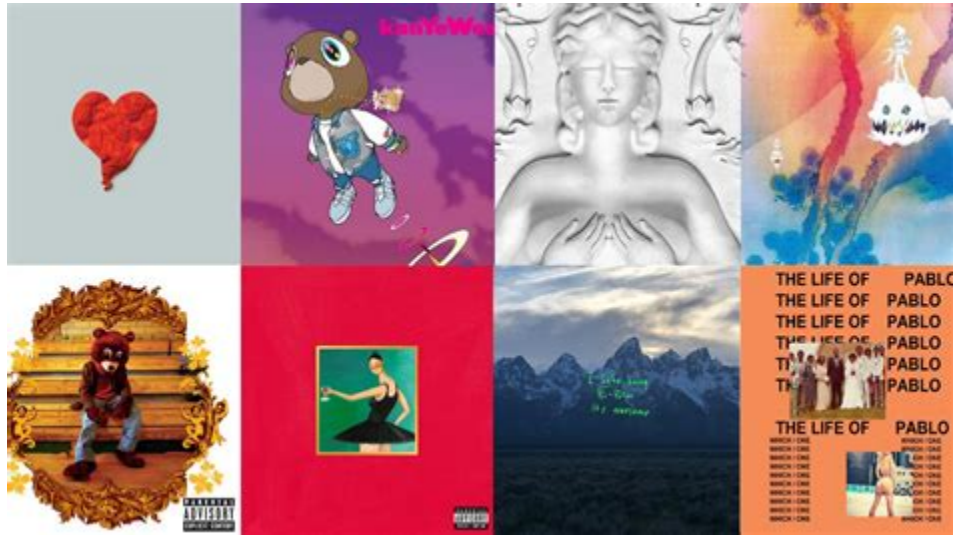
**The Conversion Rate:** Generally, there is an accepted conversion rate for tincture drops to milliliters. This rate commonly used is around 20 drops per ml. However, keep in mind that this is an approximation and may not hold true for every tincture and dropper combination out there.

**Experimentation and Calibration:** To determine the precise .

### How Many mL Is In A Dropper: Understanding The Measurement

While there isn't an exact standard conversion rate between drops and milliliters due to variations in dropper sizes and liquid viscosity, a general rule of thumb is that 20 drops are roughly equivalent to 1 milliliter.

## Every Album Release In January 2024 | Genius



5. Determine Total Length. Bringing it all together, you can now add the Max Extension + Max Insertion to get the minimum Total Length you'll need. Let's use an example from one of our own bikes, an Evil Following in size Large: Max Extension (Measurement C): 286mm. Max Insertion (Measurement D): 179mm.

**How many drops in 1 ml? Ways to measure drops in 1ml exactly**

## Milliliter to Drop Conversion Table

Milliliter [mL]	Drop
0.01 mL	0.2 drop
0.1 mL	2 drop
1 mL	20 drop
2 mL	40 drop
3 mL	60 drop
5 mL	100 drop
10 mL	200 drop
20 mL	400 drop
50 mL	1000 drop
100 mL	2000 drop
1000 mL	20000 drop

## How to Convert Milliliter to Drop

1 mL = 20 drop

1 drop = 0.05 mL

**Example:** convert 15 mL to drop:

15 mL =  $15 \times 20$  drop = 300 drop



Introduction: Accurate measurement of 1 ml in a dropper is essential for various fields such as medicine, chemistry, and cooking. Whether it's administering medication to infants, measuring precise proportions of reagents in experiments, or dispensing skincare products, understanding how to accurately

## 1 ml measuring dropper - YouTube



1 mL = 1 cm<sup>3</sup> Scott Milam 208K views 6 years ago How to Create an Action Plan and Achieve Your Goals

## Accurate Measurements: How Many ML Are In A Dropper



Homepage Question & Answers How much is 1 mL out of a dropper? The volume of liquid dispensed by a dropper can vary depending on the design and size of the dropper. However, droppers commonly used in medicine and household applications typically have a standard volume capacity of approximately 1 mL (milliliter) when filled to the maximum level.

## How Much Is 1 Ml In A Dropper? - GEGCalculators



How Many Drops in 1 mL? When measuring liquids, it's important to use the appropriate tools for accurate measurement. This may include calibrated droppers, graduated cylinders, measuring cups, or spoons. Using the wrong tools or estimating measurements can result in inaccurate dosages or formulations.

## Measuring the Dose of Liquid Medicines - ConsumerMedSafety



September 16, 2023 Wondering about the exact measurement of a dropper? When it comes to determining how many milliliters (ml) are in a dropper, it can vary depending on the specific dropper you have. Droppers typically come in different sizes, ranging from 0.5 ml to 1 ml or even larger.

### Unveiling The Exact Conversion: How Many MG in a ML Dropper



Measurement of 1 ml can be done accurately using an eyedropper or pipette. 1 ml is approximately equal to 20 drops. Drops vary in size depending on the liquid being dispensed. . 1 ml of volume is equal to 20 drops. A drop is a unit of measure used to describe the extent of an amount. It can be distributed as one drop from a dropper or drip .

- <https://groups.google.com/g/28powerlifting92/c/e4GNIJRvvmQ>
- <https://groups.google.com/g/powerpulsecrew/c/kiNNkrePPRU>

- <https://sites.google.com/view/aasreview/best-anabolic-steroids-to-buy>