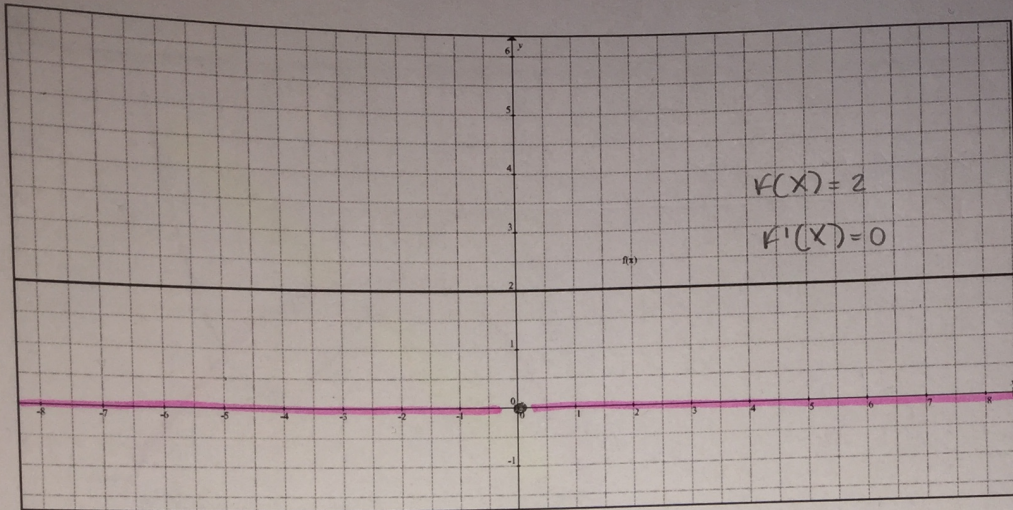
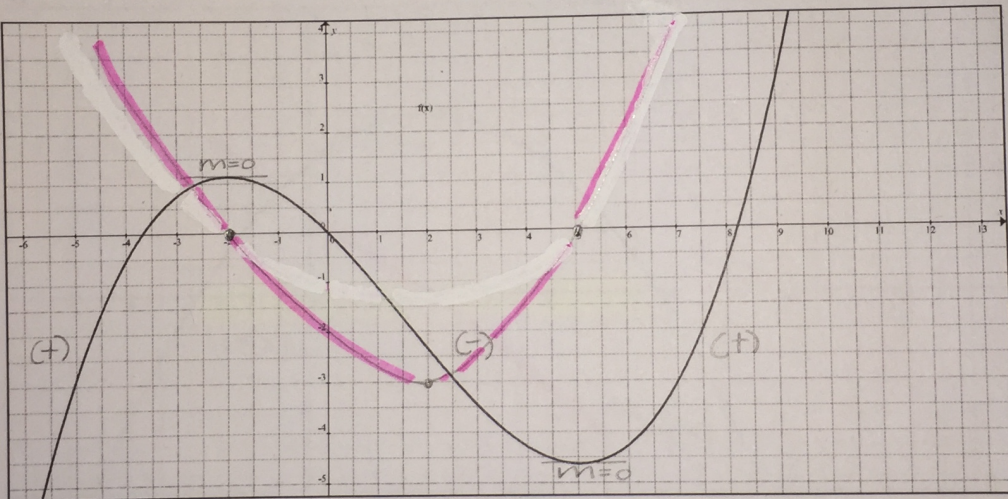


6)



7)

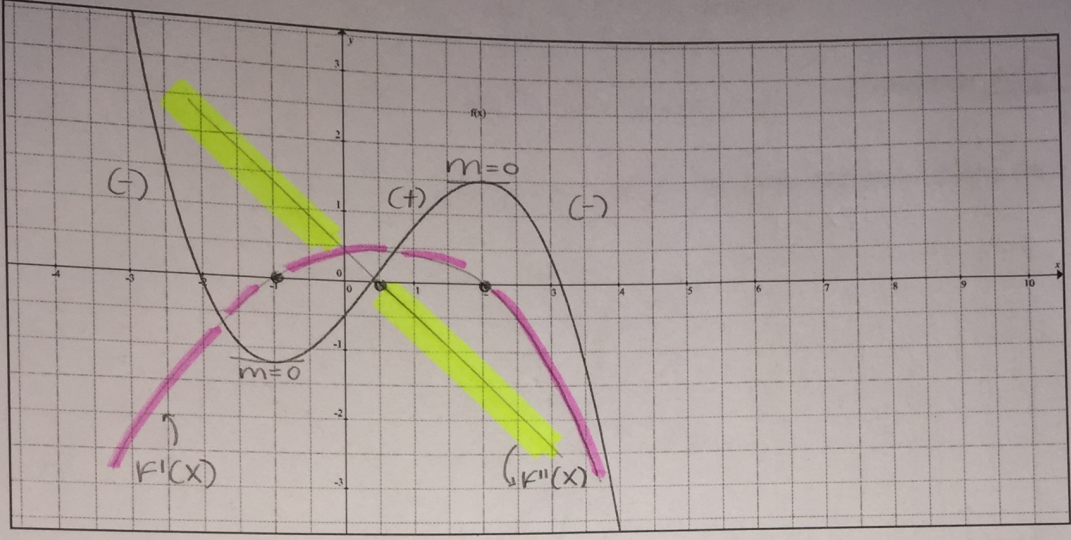


$f(x)$ is increasing $(-\infty, -2)$ $(5, \infty)$

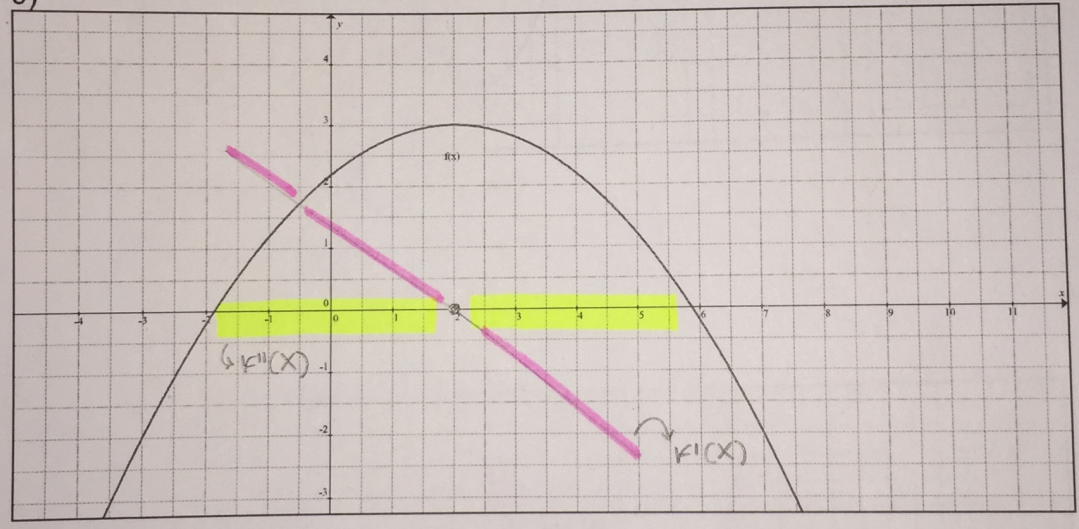
$f(x)$ is decreasing $(-2, 5)$

II. Given the graph of $f(x)$, sketch the graph of $f'(x)$ and $f''(x)$ on the same Cartesian plane (in two distinct colors)

8)



9)



10)

